

## JCI Toward Support Upchannel, Pattern since May24



Index Reaches 7600-7500, next 7460-  
Indeks kemarin melemah dan capai area 7600-7500. Jika tekanan berlanjut, maka support berikutnya di 7460, lalu 7350. Jika ada mampu ada rebound diatas 7625, maka sentimen bearish akan jauh berkurang.

Untuk hari ini Analisis Teknikal menyukai saham-saham BRMS, MDKA, ANTM, INCO, AKRA dan ITMA dengan rating trading buy.

### Top 5 SuperSTAR PANI, PTRO, BUMI, ARTO dan ADRO

#### Top Picks Today (Technical):

BRMS (230); BUY-TP @238-242; Cutloss <220  
MDKA (2720); BUY-TP @2820-2870; Cutloss <2650  
ANTM (1480); BUY-TP @1485-1550; Cutloss <1400  
INCO (4080); BUY-TP @4200-4290; Cutloss <3950  
AKRA (1550); BUY-TP @1630-1655; Cutloss <1505  
ITMA (930); BUY-TP @985-1065; Cutloss <870  
<DISC. ON>

Muhammad Alfatih,  
CFTe, CTA, CTAD, CSA, CIB  
Senior Technical Analyst  
Equity Institutional Division  
+62 21 2854 8129  
m.alfatih@samuel.co.id

IDX (2021-2024) – for the last 10 yrs, corrections tends to happened in September. But, then brings opportunity to invest until the next January.

### IDX Seasonality (5 yrs)



For the last 5 yrs, IDX usually is up in Jul and Aug with +2.3% to +1.33% average

Sector Statistic Summary			
30-09-2024	30-09-2024	SHOW	
SECTOR	TVAL	%TVAL	FNVAL
IDXINDUST	677.1B	3.9	137.9B
IDXHEALTH	445.6B	2.6	10.2B
IDXBASIC	2.1T	12.2	8.5B
IDXTECHNO	540.0B	3.1	5.4B
IDXTRANS	72.8B	0.4	309.4M
COMPOSITE	17.1T	100.0	
IDXPROPERT	495.9B	2.9	3.9B
IDXNONCYC	921.9B	5.3	21.9B
IDXINFRA	1.3T	7.6	77.8B
IDXENERGY	1.9T	11.1	368.9B
IDXCYCLIC	894.1B	5.2	506.8B
IDXFINANCE	7.6T	44.4	2,285.9B

\*Double Click for detail

### Foreign Top Buying per Top Sector

	BUY	INDUS	HLTH	BASIC	TECH
1		ASII	MIKA	BRMS	
2		UNTR		INKP	
3				MDKA	
4				AMMN	
5					

### Foreign Top Selling per Top Sector

	SELL	INDUS	HLTH	BASIC	TECH
1				INCO	
2				TPIA	
3				BRPT	

Value transaction >20M. Value <20M in Italic

### SuperSTAR Top10 (based on yesterday's closing)

Saham	Last Price	1D %Ch	Pivot	Support 2	Support 1	Resistance 1	Resistance 2
PANI	11525	-4.0%	11558	10258	10892	12192	12858
PTRO	14025	4.3%	13942	12992	13508	14458	14892
BUMI	122	0.0%	124	118	120	126	130
ARTO	3050	-3.5%	3083	2943	2997	3137	3223
ADRO	3810	-2.6%	3850	3730	3770	3890	3970
SRTG	2560	0.4%	2573	2453	2507	2627	2693
PNLF	432	-1.8%	435	423	427	439	447
DSNG	820	-2.4%	825	800	810	835	850
BRIS	3010	-1.6%	3023	2963	2987	3047	3083
BRMS	230	15.0%	221	191	211	241	251

### Top Net Foreign Order Buy

(calculated based on yesterday close)

	Daily	Weekly	Monthly	Quarterly
1	ASII	ASII	BBNI	BBCA
2	BRMS	ADRO	BBCA	BMRI
3	INKP	TPIA	TLKM	TLKM
4	AMRT	TLKM	BRIS	ASII
5	UNTR	ICBP	ASII	BRIS
6	ITMA	BRMS	AMRT	AMRT
7	MDKA	MIKA	INDF	BBNI
8	BULL	ITMA	BMRI	INDF
9	MIKA	BULL	ICBP	UNTR
10	AMMN	ADMR	UNTR	ADRO
11	BBNI	ITMG	TPIA	KLBF
12	TLKM	UNTR	ITMA	AMMN
13	ACES	INKP	MDKA	TPIA
14	FILM	PTBA	MAPI	MIKA
15	PWON	GOTO	CMRY	ISAT

Source:SamuelStar,BursaEfekIndonesia

### Top Net Foreign Order Sell

(calculated based from yesterday's close)

	Daily	Weekly	Monthly	Quarterly
1	BBRI	BBRI	BBRI	BBRI
2	BBCA	BMRI	ANTM	BREN
3	BMRI	BBCA	BREN	ANTM
4	ADRO	BREN	GOTO	GOTO
5	PTBA	AMMN	FREN	TOWR
6	BREN	FREN	SRTG	INCO
7	INCO	PGAS	HMSP	FREN
8	SCMA	BUMI	AMMN	AKRA
9	MEDC	SCMA	PTRO	MBMA
10	TPIA	MEDC	BUKA	UNVR
11	DSSA	BTPS	PGAS	TSPC
12	CPIN	PTRO	MBMA	BUKA
13	MAPI	AUTO	TBIG	HMSP
14	TOBA	SRTG	SCMA	AUTO
15	BRPT	ABMM	HRUM	SCMA

Source:SamuelStar,BursaEfekIndonesia

### Chart Recommendations

Buy	Last Price	1D%Ch	Target 1	Target 2	Stop	Rationale
BRMS	230	15.0	238	242	220	Bullish continous



BRMS (230); BUY-TP @238-242; Cutloss <220. Bullish continous

Buy	Last Price	1D%Ch	Target 1	Target 2	Stop	Rationale
MDKA	2720	0.7	2820	2870	2650	Inverted head & shoulders



MDKA (2720); BUY-TP @2820-2870; Cutloss <2650. Inverted head & shoulders (pattern since Jun24)

BUY	Last Price	1D% Ch	Target 1	Target 2	Stop	Rationale
ANTM	1480	0.7	1485	1550	1400	Anticipation breaks out trendline (Dec22)



ANTM (1480); BUY-TP @1485-1550; Cutloss <1400. Anticipation breaks out trendline (Dec22)

BUY	Last Price	1D% Ch	Target 1	Target 2	Stop	Rationale
INCO	4080	1.2	4200	4290	3950	Breaks out down channel (pattern since Jun24)



INCO (4080); BUY-TP @4200-4290; Cutloss <3950. Breaks out down channel (pattern since Jun24)

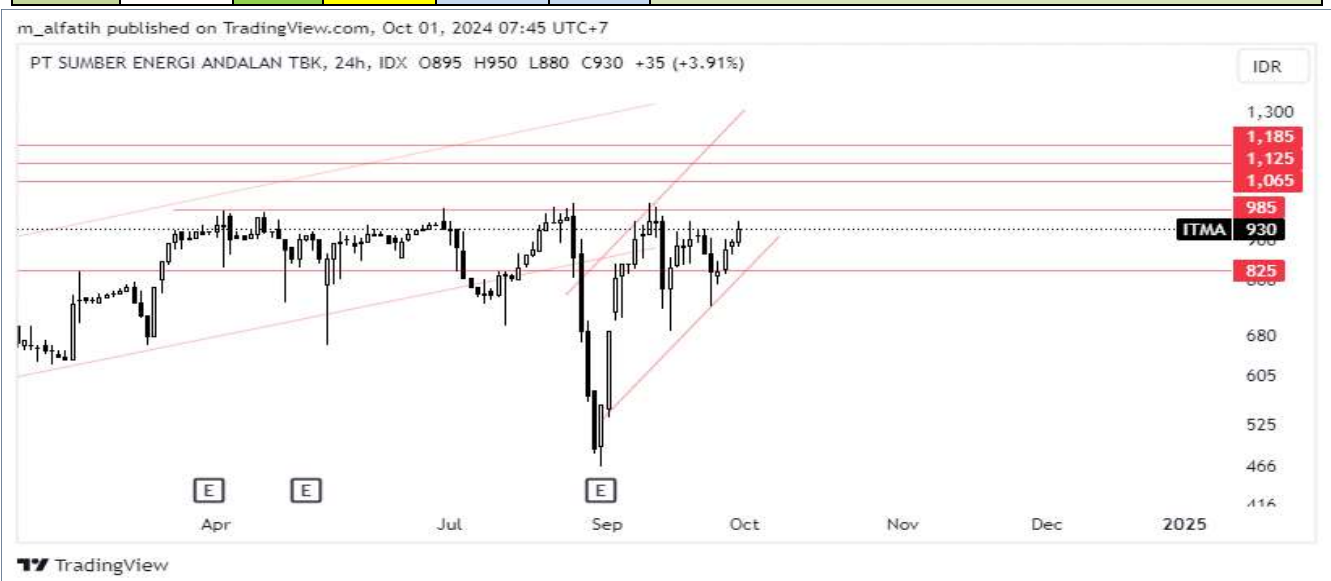


BUY	Last Price	1D% Ch	Target 1	Target 2	Stop	Rationale
AKRA	1550	-	1630	1655	1505	Engulfing bullish, anticipation breaks out



AKRA (1550); BUY-TP @1630-1655; Cutloss <1505. Engulfing bullish, anticipation breaks out (pattern since Jul24)

BUY	Last Price	1D% Ch	Target 1	Target 2	Stop	Rationale
ITMA	930	3.9	985	1065	870	Anticipation breaks out (pattern since Apr24)



ITMA (930); BUY-TP @985-1065; Cutloss <870. Anticipation breaks out (pattern since Apr24)

## Technical Analysis Glossary

TP	: <i>Target Price</i> . Target harga (naik atau turun)
TTP	: <i>Theoretical Target Price</i> . Target harga teoritis (naik atau turun), biasanya didapatkan berdasarkan suatu pola harga tertentu
Support	: Level harga di bawah, dimana berpotensi menahan penurunan lebih lanjut
Resistance	: Level harga di atas, dimana berpotensi menahan kenaikan lebih lanjut
Breakout	: Pergerakan harga naik menembus Resistance. Mengindikasikan Uptrend
Breakdown	: Pergerakan harga turun menembus Support. Mengindikasikan Downtrend
Throwback	: Penurunan paksa jangka pendek pasca Breakout. Maksimum penurunan menguji Support yang berasal dari Resistance yang baru saja di-Breakout
Pullback	: Kenaikan paksa jangka pendek pasca Breakdown. Maksimum kenaikan menguji Resistance yang berasal dari Support yang baru saja di-Breakdown
Technical Rebound	: Kenaikan yang terjadi setelah harga menyentuh level Support
Technical Correction	: Koreksi yang terjadi setelah harga menyentuh level Resistance
Bullish Continuation	: Pergerakan yang mengindikasikan Uptrend sebelumnya akan berlanjut naik
Bearish Continuation	: Pergerakan yang mengindikasikan Downtrend sebelumnya akan berlanjut turun
Bullish Reversal	: Pergerakan yang mengindikasikan perubahan Downtrend menjadi Uptrend
Bearish Reversal	: Pergerakan yang mengindikasikan perubahan Uptrend menjadi Downtrend
Up Trendline	: Support Diagonal ke arah atas yang menandakan pergerakan Uptrend
Down Trendline	: Resistance Diagonal ke arah bawah yang menandakan pergerakan Downtrend
Support Trendline (STL)	: Garis trend yang berfungsi sebagai support, biasanya bagian dari Pattern
Resistance Trendline (RTL)	: Garis trend yang berfungsi sebagai resistance. Biasanya bagian dari Pattern
Up Channel	: Pola Uptrend yang dibatasi oleh Support dan Resistance sejajar
Down Channel	: Pola Downtrend yang dibatasi oleh Support dan Resistance sejajar
Pattern	: Kelompok harga yang dapat dikenali berbentuk suatu pola
Flip Level	: Level harga yang menjadi titik kritis penentu pembalikan arah
Day Trading	: Strategi trading dengan Holding Period selama 1 hari sampai 3 hari
Swing Trading	: Strategi trading dengan Holding Period sampai 3 bulan
Bottom Fishing	: Strategi trading dengan membeli saham yang telah turun cukup dalam

Research Team			
Prasetya Gunadi	Head of Equity Research, Strategy, Banking	prasetya.gunadi@samuel.co.id	+6221 2854 8320
Fithra Faisal Hastiadi, Ph.D	Senior Economist	fithra.faisal@samuel.co.id	+6221 2854 8854
M. Farras Farhan	Oil & Gas, Coal, Metal, Renewable, Plantation	farras.farhan@samuel.co.id	+6221 2854 8346
Jonathan Guyadi	Consumer, Retail, Auto, Cigarettes	jonathan.guyadi@samuel.co.id	+6221 2854 8846
Daniel Aditya	Cement, Healthcare, Telco, Infra, Transportation	daniel.aditya@samuel.co.id	+6221 2854 8322
Adolf Richardo	Editor	adolfrichardo@samuel.co.id	+6221 2864 8397
Ashalia Fitri Yuliana	Research Associate	ashalia.fitri@samuel.co.id	+6221 2854 8389
Brandon Boedhiman	Research Associate	brandon.boedhiman@samuel.co.id	+6221 2854 8392
Belva Monica	Research Associate, Poultry	belva.monica@samuel.co.id	+6221 2854 8339
Ahnaf Yassar Lilo	Research Associate, Toll Roads, Property	ahnaf.yassar@samuel.co.id	+6221 2854 8392
Hernanda Cahyo Suryadi	Research Associate, Mining Contracting	hernanda.cahyo@samuel.co.id	+6221 2854 8392
Steven Prasetya	Research Associate	steven.prasetya@samuel.co.id	+6221 2854 8392

Equity Institutional Team			
Widya Meidrianto	Head of Institutional Equity Sales	widya.meidrianto@samuel.co.id	+6221 2854 8317
Muhamad Alfatih, CSA, CTA, CFTe	Senior Technical Analyst	m.alfatih@samuel.co.id	+6221 2854 8129
Ronny Ardianto	Institutional Equity Sales	ronny.ardianto@samuel.co.id	+6221 2854 8399
Fachruly Fiater	Institutional Sales Trader	fachruly.fiater@samuel.co.id	+6221 2854 8325
Lucia Irawati	Institutional Sales Trader	lucia.irawati@samuel.co.id	+6221 2854 8173
Alexander Tayus	Institutional Equity Dealer	alexander.tayus@samuel.co.id	+6221 2854 8319
Leonardo Christian	Institutional Equity Dealer	leonardo.christian@samuel.co.id	+6221 2854 8147

Equity Retail Team			
Joseph Soegandhi	Director of Equity	joseph.soegandhi@samuel.co.id	+6221 2854 8872
Damargumilang	Head of Equity Retail	damargumilang@samuel.co.id	+6221 2854 8309
Anthony Yunus	Head of Equity Sales	anthony.yunus@samuel.co.id	+6221 2854 8314
Clarice Wijana	Head of Equity Sales Support	clarice.wijana@samuel.co.id	+6221 2854 8395
Denzel Obaja	Equity Retail Chartist	denzel.obaja@samuel.co.id	+6221 2854 8342
Gitta Wahyu Retnani	Equity Sales & Trainer	gitta.wahyu@samuel.co.id	+6221 2854 8365
Vincentius Darren	Equity Sales	darren@samuel.co.id	+6221 2854 8348
Sylviawati	Equity Sales Support	sylviawati@samuel.co.id	+6221 2854 8112
Handa Sandiawan	Equity Sales Support	handa.sandiawan@samuel.co.id	+6221 2854 8302
Yonathan	Dealer	yonathan@samuel.co.id	+6221 2854 8347
Michael Alexander	Dealer	michael.alexander@samuel.co.id	+6221 2854 8369
Reza Fahlevi	Dealer	reza.fahlevi@samuel.co.id	+6221 2854 8359

Fixed Income Sales Team			
R. Virine Tresna Sundari	Head of Fixed Income	virine.sundari@samuel.co.id	+6221 2854 8170
Sany Rizal Keliobas	Fixed Income Sales	sany.rizal@samuel.co.id	+6221 2854 8337
Khairanni	Fixed Income Sales	khairanni@samuel.co.id	+6221 2854 8104
Muhammad Alfizar	Fixed Income Sales	muhammad.alfizar@samuel.co.id	+6221 2854 8305