

## JCI: Consolidation with slightly bullish bias



### Still Consolidation between 7025-7270

Indeks kemarin kembali tertekan. Melihat pola dalam 3 pekan terakhir, maka masih konsolidasi. Dengan pola transaksi di konsolidasi, maka ada kemungkinan indeks dibuka turun lalu tutup diatas. Kisaran transaksi di 7025-7270.

Untuk hari ini Analisis Teknikal menyukai saham-saham BMRI, BFIN, CUAN, MEDC dan ISAT dengan rating trading buy. Namun ASII dengan rating trading sell.

### Day Trading Picks

#### Top Picks Today (Technical):

BMRI (6325); BUY-TP @6450-6525; Cutloss <6225  
 BFIN (1055); BUY-TP @1085-1150; Cutloss <995  
 CUAN (7600); BUY-TP @7975-8425; Cutloss <7250  
 MEDC (1315); BUY-TP @1365-1410; Cutloss <1270  
 ISAT (10900); BUY-TP @11125-11200; Cutloss <10825  
 ASII (5175); SELL-TP @5100-5050; Cover >5575  
 <DISC. ON>



M. Alfatih, CFTe, CSA,  
 CTA, CTAD, CIB  
 Senior Technical Analyst  
 Equity Institutional Division  
 +62 21 2854 8129  
 m.alfatih@samuel.co.id

**JCI Today's Top10 Value**

Saham	Last Price	1D %Ch	Pivot	Support 2	Support 1	Resistance 1	Resistance 2
BMRI	6325	-8.3%	6392	7142	5983	6733	7142
BBRI	4760	-3.6%	4793	5013	4667	4887	5013
BBCA	9550	-2.6%	9650	10050	9400	9800	10050
BBNI	4830	-8.0%	4963	5403	4677	5117	5403
ASII	5175	0.5%	5208	5308	5142	5242	5308
TLKM	3120	-1.6%	3147	3227	3093	3173	3227
TPIA	7825	3.3%	7925	8725	7475	8275	8725
AMMN	9775	0.8%	9750	10025	9625	9900	10025
BRPT	1000	-2.0%	1022	1107	968	1053	1107
BREN	9875	7.0%	9658	10308	9442	10092	10308

**Top Net Foreign Order Buy**

	Daily	Weekly	Monthly	Quarterly
1	ASII	BBCA	BREN	TPIA
2	TPIA	ASII	TPIA	BREN
3	BREN	TPIA	PGAS	AMRT
4	GOTO	PGAS	GOTO	ITMA
5	OASA	BREN	ITMA	BRIS
6	MAPI	MAPA	BFIN	PGAS
7	PGAS	GOTO	SIDO	MAPI
8	BFIN	BRPT	AKRA	MEDC
9	SMGR	SMGR	AMRT	BFIN
10	MNCN	OASA	MAPA	FILM
11	BBCA	ITMA	BRIS	OASA
12	EXCL	MAPI	OASA	SIDO
13	SIDO	SIDO	MAPI	CTRA
14	UNVR	BFIN	MDKA	MAPA
15	MAPA	MIDI	ARTO	BULL

Source:SamuelStar,BursaEfekIndonesia

**Top Net Foreign Order Sell**

	Daily	Weekly	Monthly	Quarterly
1	BMRI	BBRI	BBRI	BBRI
2	BBRI	BMRI	TLKM	TLKM
3	BBNI	TLKM	BBCA	BBCA
4	UNTR	BBNI	BMRI	ASII
5	ANTM	AMMN	BBNI	MDKA
6	TLKM	UNTR	ASII	BBNI
7	MEDC	ANTM	AMMN	INCO
8	MDKA	MDKA	ISAT	UNTR
9	BRIS	ACES	ADRO	CUAN
10	ICBP	MEDC	ICBP	BTPS
11	ACES	ICBP	TOWR	KLBF
12	BRPT	PWON	INDF	AVIA
13	KLBF	BHAT	KLBF	NISP
14	CUAN	KLBF	BNGA	PTBA
15	FILM	MYOR	SMRA	MBMA

Source:SamuelStar,BursaEfekIndonesia

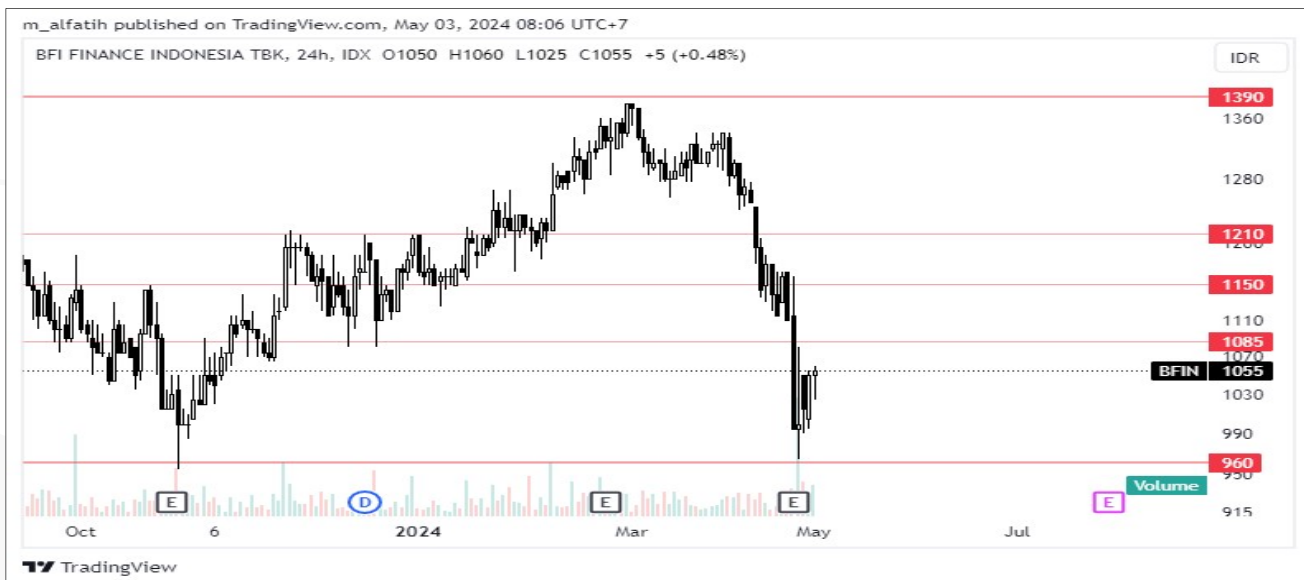
### Chart Recommendations

Buy	Last Price	1D%Ch	Target 1	Target 2	Stop	Rationale
BMRI	6325	-8.3	6450	6525	6225	Buying with volume from strong trendline



BMRI (6325); CEK-TP @6450-6525; Cutloss <6225. Buying with volume from strong trendline around 6225 (patern since Oct22)

Buy	Last Price	1D%Ch	Target 1	Target 2	Stop	Rationale
BFIN	1055	0.47	1085	1150	995	Rebound from support



BFIN (1055); BUY-TP @1085-1150; Cutloss <995. Rebound from support in consolidation between 960-1390 (pattern since Oct21)

Sp. Buy	Last Price	1D% Ch	Target 1	Target 2	Stop	Rationale
CUAN	7600	2.01	7975	8425	7250	Continuation pattern



CUAN (7600); BUY-TP @7975-8425; Cutloss <7250. Continuation pattern, upchannel (pattern since Apr24)

BUY	Last Price	1D% Ch	Target 1	Target 2	Stop	Rationale
MEDC	1315	-2.6	1365	1410	1270	Rebound intraday from trendline at 1270



MEDC (1315); BUY-TP @1365-1410; Cutloss <1270. Rebound intraday from trendline at 1270 (pattern since Dec23)

BUY	Last Price	1D% Ch	Target 1	Target 2	Stop	Rationale
ISAT	10900	-0.9	11125	11200	10825	Rebound from support at 10675



ISAT (10900); BUY-TP @11125-11200; Cutloss <10825. Rebound from support at 10675 (pattern since Feb24 & another pattern from Oct23)

SELL	Last Price	1D% Ch	Target 1	Target 2	Cover	Rationale
ASII	5175	0.48	5100	5050	5575	Selling near resistance (pattern since Jun23).



ASII (5175); SELL-TP @5100-5050; Cover >5575. Selling near resistance (pattern since Jun23). But if breaks 5225, then become uptrend

## Technical Analysis Glossary

TP	: <i>Target Price</i> . Target harga (naik atau turun)
TTP	: <i>Theoretical Target Price</i> . Target harga teoritis (naik atau turun), biasanya didapatkan berdasarkan suatu pola harga tertentu
Support	: Level harga di bawah, dimana berpotensi menahan penurunan lebih lanjut
Resistance	: Level harga di atas, dimana berpotensi menahan kenaikan lebih lanjut
Breakout	: Pergerakan harga naik menembus Resistance. Mengindikasikan Uptrend
Breakdown	: Pergerakan harga turun menembus Support. Mengindikasikan Downtrend
Throwback	: Penurunan paksa jangka pendek pasca Breakout. Maksimum penurunan menguji Support yang berasal dari Resistance yang baru saja di-Breakout
Pullback	: Kenaikan paksa jangka pendek pasca Breakdown. Maksimum kenaikan menguji Resistance yang berasal dari Support yang baru saja di-Breakdown
Technical Rebound	: Kenaikan yang terjadi setelah harga menyentuh level Support
Technical Correction	: Koreksi yang terjadi setelah harga menyentuh level Resistance
Bullish Continuation	: Pergerakan yang mengindikasikan Uptrend sebelumnya akan berlanjut naik
Bearish Continuation	: Pergerakan yang mengindikasikan Downtrend sebelumnya akan berlanjut turun
Bullish Reversal	: Pergerakan yang mengindikasikan perubahan Downtrend menjadi Uptrend
Bearish Reversal	: Pergerakan yang mengindikasikan perubahan Uptrend menjadi Downtrend
Up Trendline	: Support Diagonal ke arah atas yang menandakan pergerakan Uptrend
Down Trendline	: Resistance Diagonal ke arah bawah yang menandakan pergerakan Downtrend
Up Channel	: Pergerakan Uptrend yang dibatasi oleh Support dan Resistance sejajar
Down Channel	: Pergerakan Downtrend yang dibatasi oleh Support dan Resistance sejajar
Day Trading	: Strategi trading dengan Holding Period selama 1 hari sampai 3 hari
Swing Trading	: Strategi trading dengan Holding Period sampai 3 bulan
Bottom Fishing	: Strategi trading dengan membeli saham yang telah turun cukup dalam

Research Team			
Prasetya Gunadi	Head of Equity Research, Strategy, Banking, Digital Banks	prasetya.gunadi@samuel.co.id	+6221 2854 8320
Fithra Faisal Hastiadi	Senior Economist	Fithra.faisal@samuel.co.id	+6221 2854 8854
Yosua Zisokhi	Cement , Cigarette, Paper, Plantation, Telco Infra, Chemicals	yosua.zisokhi@samuel.co.id	+6221 2854 8387
M. Farras Farhan	Media, Poultry, Oil & Gas, Technology	farras.farhan@samuel.co.id	+6221 2854 8346
Juan Oktavianus Harahap	Coal, Metal Mining	juan.oktavianus@samuel.co.id	+6221 2854 8846
Adolf Richardo	Editor	adolf.richardo@samuel.co.id	+6221 2864 8397
Ashalia Fitri Yuliana	Research Associate	ashalia.fitri@samuel.co.id	+6221 2854 8389
Daniel Aditya Widjaja	Research Associate	daniel.aditya@samuel.co.id	+6221 2854 8322
Laurencia Hiemas	Research Associate	laurencia.hiemas@samuel.co.id	+6221 2854 8392
Brandon Boedhiman	Research Associate	brandon.boedhiman@samuel.co.id	+6221 2854 8392
Haikal Putra Samsul	Research Associate	haikal.putra@samuel.co.id	+6221 2854 8353

Equity Institutional Team			
Widya Meidrianto	Head of Institutional Equity Sales	widya.meidrianto@samuel.co.id	+6221 2854 8317
Muhamad Alfatih, CSA, CTA, CFTE	Senior Technical Analyst	m.alfatih@samuel.co.id	+6221 2854 8129
Ronny Ardianto	Institutional Equity Sales	ronny.ardianto@samuel.co.id	+6221 2854 8399
Fachruly Fiater	Institutional Sales Trader	fachruly.fiater@samuel.co.id	+6221 2854 8325
Lucia Irawati	Institutional Sales Trader	lucia.irawati@samuel.co.id	+6221 2854 8173
Alexander Tayus	Institutional Equity Dealer	alexander.tayus@samuel.co.id	+6221 2854 8319
Leonardo Christian	Institutional Equity Dealer	leonardo.christian@samuel.co.id	+6221 2854 8147

Equity Retail Team			
Joseph Soegandhi	Director of Equity	joseph.soegandhi@samuel.co.id	+6221 2854 8872
Damargumilang	Head of Equity Retail	damargumilang@samuel.co.id	+6221 2854 8309
Anthony Yunus	Head of Equity Sales	anthony.yunus@samuel.co.id	+6221 2854 8314
Clarice Wijana	Head of Equity Sales Support	clarice.wijana@samuel.co.id	+6221 2854 8395
Gitta Wahyu Retnani	Equity Sales & Trainer	gitta.wahyu@samuel.co.id	+6221 2854 8365
Vincentius Darren	Equity Sales	darren@samuel.co.id	+6221 2854 8348
Sylviawati	Equity Sales Support	sylviawati@samuel.co.id	+6221 2854 8112
Handa Sandiawan	Equity Sales Support	handa.sandiawan@samuel.co.id	+6221 2854 8302
Denzel Obaja	Equity Retail Chartist	denzel.obaja@samuel.co.id	+6221 2854 8342
Yonathan	Dealer	yonathan@samuel.co.id	+6221 2854 8347
Michael Alexander	Dealer	michael.alexander@samuel.co.id	+6221 2854 8369
Reza Fahlevi	Dealer	reza.fahlevi@samuel.co.id	+6221 2854 8359

Fixed Income Sales Team			
R. Virine Tresna Sundari	Head of Fixed Income	virine.sundari@samuel.co.id	+6221 2854 8170
Sany Rizal Keliobas	Fixed Income Sales	sany.rizal@samuel.co.id	+6221 2854 8337
Safitri	Fixed Income Sales	safitri@samuel.co.id	+6221 2854 8376
Khairanni	Fixed Income Sales	khairanni@samuel.co.id	+6221 28548104

**DISCLAIMERS** :Analyst Certification : The views expressed in this research accurately reflect the personal views of the analyst(s) about the subject securities or issuers and no part of the compensation of the analyst(s) was, is, or will be directly or indirectly related to the inclusion of specific recommendations or views in this research. The analyst(s) principally responsible for the preparation of this research has taken reasonable care to achieve and maintain independence and objectivity in making any recommendations. This document is for information only and for the use of the recipient. It is not to be reproduced or copied or made available to others. Under no circumstances is it to be considered as an offer to sell or solicitation to buy any security. Any recommendation contained in this report may not be suitable for all investors. Moreover, although the information contained herein has been obtained from sources believed to be reliable, its accuracy, completeness and reliability cannot be guaranteed. All rights reserved by PT Samuel Sekuritas Indonesia