

## JCI: Bearish Double Top



IHSG may have a pullback rebound, with Strong Resistance at 7135-7170

Indeks kemarin masih melemah, namun dengan intraday rebound. Meski secara teoritis target penurunan ada di sekitar 6900-6850, namun ada kemungkinan mengalami rebound jangka pendek sebagai pullback dengan batas 7135-7170.

Untuk hari ini Analis Teknikal menyukai saham-saham ASII, BBRI, TINS, INDF dan DSNG dengan rating trading buy. Lalu MEDC dengan rating trading sell.

## Day Trading Picks

Top Picks Today (Technical):

ASII (4950); BUY-TP @4990-5050; Cutloss <4940  
 BBRI (5300); BUY-TP @5375-5450; Cutloss <5200  
 TINS (1065); BUY-TP @1145-1225; Cutloss <1020  
 INDF (6150); BUY-TP @6200-6250; Cutloss <6100  
 DSNG (680); BUY-TP @690-715; Cutloss <665  
 MEDC (1480); SELL-TP @1415-1365; Cover >1510  
 <DISC. ON>



M. Alfatih, CFTe, CSA,  
 CTA, CTAD, CIB  
 Senior Technical Analyst  
 Equity Institutional Division  
 +62 21 2854 8129  
 m.alfatih@samuel.co.id

**JCI Today's Top10 Value**

Saham	Last Price	1D %Ch	Pivot	Support 2	Support 1	Resistance 1	Resistance 2
BBRI	5300	0.5%	5258	5433	5192	5367	5433
BBCA	9350	-1.3%	9375	9450	9325	9400	9450
BMRI	6725	0.0%	6725	7025	6575	6875	7025
TLKM	3170	0.6%	3167	3237	3133	3203	3237
BBNI	5350	2.4%	5283	5483	5217	5417	5483
ASII	4950	1.0%	4960	5010	4930	4980	5010
AMMN	8750	-1.4%	8808	8983	8692	8867	8983
BREN	7625	-6.2%	7725	8475	7300	8050	8475
INCO	4410	0.2%	4447	4577	4363	4493	4577
TINS	1065	6.5%	1055	1145	1015	1105	1145

**Top Net Foreign Order Buy**

	Daily	Weekly	Monthly	Quarterly
1	BMRI	BREN	BREN	TPIA
2	TPIA	TPIA	TPIA	AMRT
3	ANTM	BBNI	AMRT	BREN
4	BBNI	PGAS	PGAS	BRIS
5	NCKL	ANTM	ITMA	BMRI
6	SMGR	AKRA	GOTO	ITMA
7	TINS	ITMA	AKRA	AMMN
8	INDF	SIDO	BBTN	MAPI
9	ACES	PGEO	BFIN	MEDC
10	AKRA	ADMR	ADMR	PGAS
11	ITMA	MDKA	PGEO	FILM
12	ASII	BFIN	CMRY	BULL
13	ADMR	ARTO	CTRA	ACES
14	BREN	OASA	BRIS	OASA
15	MEDC	MBMA	ARTO	BFIN

Source: SamuelStar, BursaEfekIndonesia

**Top Net Foreign Order Sell**

	Daily	Weekly	Monthly	Quarterly
1	BBCA	BBCA	TLKM	ASII
2	BBRI	BBRI	BBCA	TLKM
3	TLKM	TLKM	BBRI	BBCA
4	UNTR	ASII	BMRI	BBRI
5	AMMN	ADRO	BBNI	MDKA
6	INCO	INDF	ASII	CUAN
7	ADRO	UNTR	ISAT	INCO
8	FILM	ISAT	ADRO	BTPS
9	PTBA	TOWR	UNTR	KLBF
10	MDKA	UNVR	KLBF	UNTR
11	NICE	BNGA	UNVR	AVIA
12	PANI	SMRA	INCO	MBMA
13	BNGA	MEDC	INDF	NISP
14	TOWR	PWON	TOWR	UNVR
15	ISAT	AMMN	JSMR	MTEL

Source: SamuelStar, BursaEfekIndonesia

### Chart Recommendations

Buy	Last Price	1D%Ch	Target 1	Target 2	Stop	Rationale
ASII	4950	1.02	4990	5050	4940	Bullish harami pattern



ASII (4950); BUY-TP @4990-5050; Cutloss <4940. Bullish harami pattern (near TTP and trendline since Feb2022)

Buy	Last Price	1D%Ch	Target 1	Target 2	Stop	Rationale
BBRI	5300	0.47	5375	5450	5200	Rebound from trendline



BBRI (5300); Spec. BUY-TP @5375-5450; Cutloss <5200. Rebound from trendline (pattern since Oct2022)

Buy	Last Price	1D% Ch	Target 1	Target 2	Stop	Rationale
TINS	1065	6.5	1145	1225	1020	Toward target after falling wedge pattern



TINS (1065); BUY-TP @1145-1225; Cutloss <1020. Toward target after falling wedge continuous pattern

BUY	Last Price	1D% Ch	Target 1	Target 2	Stop	Rationale
INDF	6150	0.81	6200	6250	6100	Rebound from trendline (pattern since May23)



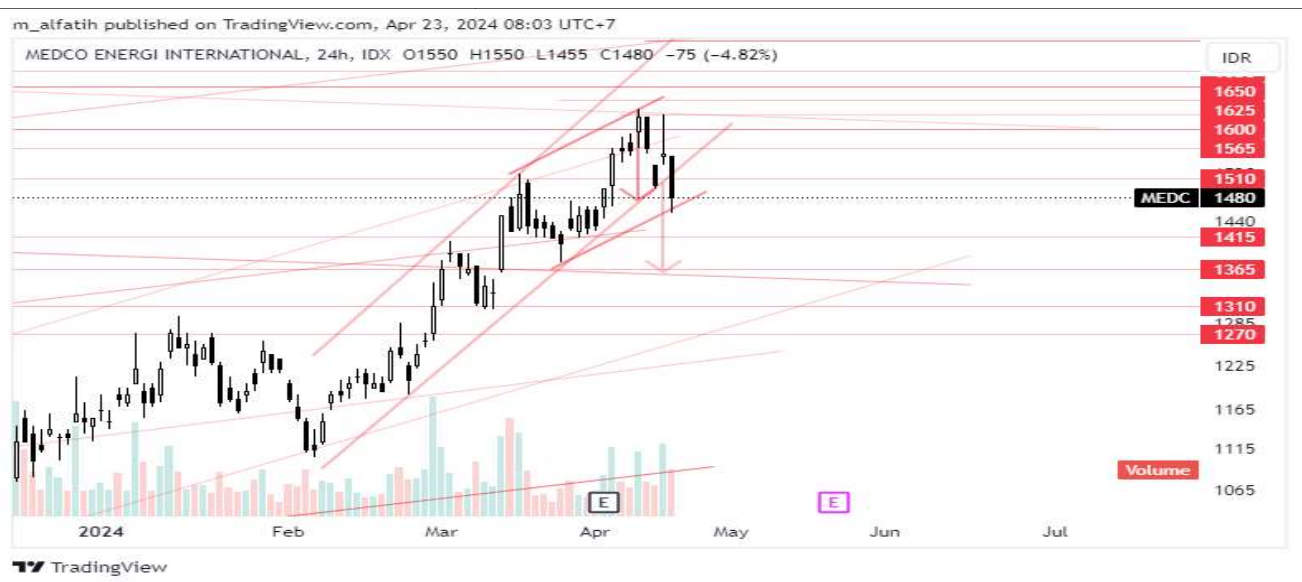
INDF (6150); BUY-TP @6200-6250; Cutloss <6100. Rebound from trendline (pattern since May23)

BUY	Last Price	1D% Ch	Target 1	Target 2	Stop	Rationale
DSNG	680	3.81	690	715	665	Upchannel, rebound from trendline



DSNG (680); BUY-TP @690-715; Cutloss <665. Upchannel, rebound from trendline (pattern since Jul23)

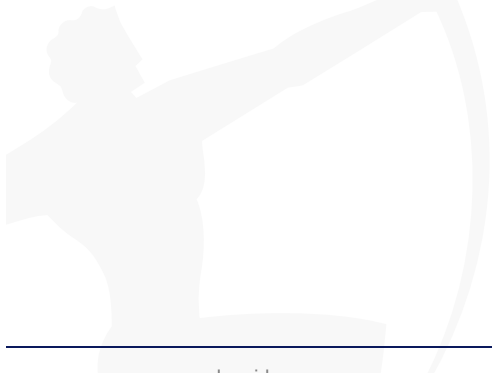
SELL	Last Price	1D% Ch	Target 1	Target 2	Cover	Rationale
MEDC	1480	-4.8	1415	1365	1510	Upchannel breaks down



MEDC (1480); SELL-TP @1415-1365; Cover >1510. Upchannel breaks down (pattern since Feb24)

## Technical Analysis Glossary

<b>Support</b>	: Level harga di bawah, dimana berpotensi menahan penurunan lebih lanjut
<b>Resistance</b>	: Level harga di atas, dimana berpotensi menahan kenaikan lebih lanjut
<b>Breakout</b>	: Pergerakan harga naik menembus Resistance. Mengindikasikan Uptrend
<b>Breakdown</b>	: Pergerakan harga turun menembus Support. Mengindikasikan Downtrend
<b>Throwback</b>	: Penurunan paksa jangka pendek pasca Breakout. Maksimum penurunan menguji Support yang berasal dari Resistance yang baru saja di-Breakout
<b>Pullback</b>	: Kenaikan paksa jangka pendek pasca Breakdown. Maksimum kenaikan menguji Resistance yang berasal dari Support yang baru saja di-Breadown
<b>Technical Rebound</b>	: Kenaikan yang terjadi setelah harga menyentuh level Support
<b>Technical Correction</b>	: Koreksi yang terjadi setelah harga menyentuh level Resistance
<b>Bullish Continuation</b>	: Pergerakan yang mengindikasikan Uptrend sebelumnya akan berlanjut naik
<b>Bearish Continuation</b>	: Pergerakan yang mengindikasikan Downtrend sebelumnya akan berlanjut turun
<b>Bullish Reversal</b>	: Pergerakan yang mengindikasikan perubahan Downtrend menjadi Uptrend
<b>Bearish Reversal</b>	: Pergerakan yang mengindikasikan perubahan Uptrend menjadi Downtrend
<b>Up Trendline</b>	: Support Diagonal ke arah atas yang menandakan pergerakan Uptrend
<b>Down Trendline</b>	: Resistance Diagonal ke arah bawah yang menandakan pergerakan Downtrend
<b>Up Channel</b>	: Pergerakan Uptrend yang dibatasi oleh Support dan Resistance sejajar
<b>Down Channel</b>	: Pergerakan Downtrend yang dibatasi oleh Support dan Resistance sejajar
<b>Day Trading</b>	: Strategi trading dengan Holding Period selama 1 hari sampai 3 hari
<b>Swing Trading</b>	: Strategi trading dengan Holding Period sampai 3 bulan
<b>Bottom Fishing</b>	: Strategi trading dengan membeli saham yang telah turun cukup dalam



Research Team			
Prasetya Gunadi	Head of Equity Research, Strategy, Banking, Digital Banks	prasetya.gunadi@samuel.co.id	+6221 2854 8320
Fithra Faisal Hastiadi	Senior Economist	Fithra.faisal@samuel.co.id	+6221 2854 8854
Yosua Zisokhi	Cement , Cigarette, Paper, Plantation, Telco Infra, Chemicals	yosua.zisokhi@samuel.co.id	+6221 2854 8387
M. Farras Farhan	Media, Poultry, Oil & Gas, Technology	farras.farhan@samuel.co.id	+6221 2854 8346
Juan Oktavianus Harahap	Coal, Metal Mining	juan.oktavianus@samuel.co.id	+6221 2854 8846
Adolf Richardo	Editor	adolf.richardo@samuel.co.id	+6221 2864 8397
Ashalia Fitri Yuliana	Research Associate	ashalia.fitri@samuel.co.id	+6221 2854 8389
Daniel Aditya Widjaja	Research Associate	daniel.aditya@samuel.co.id	+6221 2854 8322
Laurencia Hiemas	Research Associate	laurencia.hiemas@samuel.co.id	+6221 2854 8392
Brandon Boedhiman	Research Associate	brandon.boedhiman@samuel.co.id	+6221 2854 8392
Haikal Putra Samsul	Research Associate	haikal.putra@samuel.co.id	+6221 2854 8353

Equity Institutional Team			
Widya Meidrianto	Head of Institutional Equity Sales	widya.meidrianto@samuel.co.id	+6221 2854 8317
Muhamad Alfatih, CSA, CTA, CFTE	Senior Technical Analyst	m.alfatih@samuel.co.id	+6221 2854 8129
Ronny Ardianto	Institutional Equity Sales	ronny.ardianto@samuel.co.id	+6221 2854 8399
Fachruly Fiater	Institutional Sales Trader	fachruly.fiater@samuel.co.id	+6221 2854 8325
Lucia Irawati	Institutional Sales Trader	lucia.irawati@samuel.co.id	+6221 2854 8173
Alexander Tayus	Institutional Equity Dealer	alexander.tayus@samuel.co.id	+6221 2854 8319
Leonardo Christian	Institutional Equity Dealer	leonardo.christian@samuel.co.id	+6221 2854 8147

Equity Retail Team			
Joseph Soegandhi	Director of Equity	joseph.soegandhi@samuel.co.id	+6221 2854 8872
Damargumilang	Head of Equity Retail	damargumilang@samuel.co.id	+6221 2854 8309
Anthony Yunus	Head of Equity Sales	anthony.yunus@samuel.co.id	+6221 2854 8314
Clarice Wijana	Head of Equity Sales Support	clarice.wijana@samuel.co.id	+6221 2854 8395
Gitta Wahyu Retnani	Equity Sales & Trainer	gitta.wahyu@samuel.co.id	+6221 2854 8365
Vincentius Darren	Equity Sales	darren@samuel.co.id	+6221 2854 8348
Sylviawati	Equity Sales Support	sylviawati@samuel.co.id	+6221 2854 8112
Handa Sandiawan	Equity Sales Support	handa.sandiawan@samuel.co.id	+6221 2854 8302
Denzel Obaja	Equity Retail Chartist	denzel.obaja@samuel.co.id	+6221 2854 8342
Yonathan	Dealer	yonathan@samuel.co.id	+6221 2854 8347
Michael Alexander	Dealer	michael.alexander@samuel.co.id	+6221 2854 8369
Reza Fahlevi	Dealer	reza.fahlevi@samuel.co.id	+6221 2854 8359

Fixed Income Sales Team			
R. Virine Tresna Sundari	Head of Fixed Income	virine.sundari@samuel.co.id	+6221 2854 8170
Sany Rizal Keliobas	Fixed Income Sales	sany.rizal@samuel.co.id	+6221 2854 8337
Safitri	Fixed Income Sales	safitri@samuel.co.id	+6221 2854 8376
Khairanni	Fixed Income Sales	khairanni@samuel.co.id	+6221 28548104

**DISCLAIMERS** :Analyst Certification : The views expressed in this research accurately reflect the personal views of the analyst(s) about the subject securities or issuers and no part of the compensation of the analyst(s) was, is, or will be directly or indirectly related to the inclusion of specific recommendations or views in this research. The analyst(s) principally responsible for the preparation of this research has taken reasonable care to achieve and maintain independence and objectivity in making any recommendations. This document is for information only and for the use of the recipient. It is not to be reproduced or copied or made available to others. Under no circumstances is it to be considered as an offer to sell or solicitation to buy any security. Any recommendation contained in this report may not be suitable for all investors. Moreover, although the information contained herein has been obtained from sources believed to be reliable, its accuracy, completeness and reliability cannot be guaranteed. All rights reserved by PT Samuel Sekuritas Indonesia