

Window Dressing IDX80 4th week of Dec 2023

Dec 27, 2023

Window Dressing Stocks - IDX80 Index



From 10yrs data of 4th week of December's price movement, we found several stock have shown relatively consistent upside movement in the last 5-10yrs.

| | | Price Movement in the last week of December | | | | | | | | | | | | | |
|----|------|---|----------|-------|------|------|-------|-------|-------|--------|------|-------|-------|--------|-------|
| | | 10yrs Avg | 5yrs Avg | 2023 | 2022 | 2021 | 2020 | 2019 | 2018 | 2017 | 2016 | 2015 | 2014 | 2013 | 2012 |
| 1 | BBRI | 2.0% | 0.6% | 2.3% | 1.2% | 1.0% | -2.8% | 1.6% | 1.1% | 5.2% | 7.4% | 2.1% | 0.6% | 4.3% | 0.0% |
| 3 | BBCA | 1.2% | 0.2% | 1.1% | 0.6% | 0.0% | -1.1% | 0.5% | 0.6% | 1.9% | 7.3% | -0.4% | 0.2% | 1.6% | 2.2% |
| 7 | TPIA | 8.2% | 4.8% | 19.2% | 3.2% | 1.7% | 0.8% | -0.9% | 3.9% | 8.1% | 1.9% | 0.0% | 0.0% | 4.8% | 56.0% |
| 9 | AMRT | 2.0% | 1.9% | 2.5% | 1.1% | 0.4% | 4.8% | 0.6% | -1.1% | -1.6% | 9.6% | 0.0% | 0.0% | 0.0% | 7.1% |
| 11 | ADRO | 0.4% | 1.7% | 2.8% | 1.0% | 1.4% | 0.7% | 2.6% | -2.8% | -1.6% | 2.4% | 2.0% | 0.0% | -4.4% | 1.3% |
| 15 | MDKA | 5.3% | 7.6% | 16.8% | 2.7% | 0.8% | 13.4% | 4.3% | 14.8% | -4.8% | 0.0% | 0.0% | | | |
| 42 | MYOR | -0.9% | 3.2% | 3.5% | 1.6% | 2.0% | 3.6% | 5.1% | 0.8% | -14.4% | 2.2% | -0.9% | -4.2% | -13.1% | 3.2% |
| 63 | ERAA | 3.1% | 6.1% | 16.4% | 1.0% | 0.0% | 4.4% | 8.8% | 0.0% | -5.2% | 0.0% | 8.7% | -1.8% | -3.9% | 9.3% |
| 35 | MTEL | 5.1% | 5.1% | 4.2% | 5.3% | 5.7% | | | | | | | | | |

For full list of IDX80 4th week Dec performance, pls click [here](#)

BBCA – last 9325



BUY.
Target 9400-9500.
Stop 9250.
Continous Bullish, toward double bottom target



BBRI – last 5675



BUY.
Target 5750-5850. Next 5900.
Stop 5575.
Upchannel



ADRO – last 2590



BUY, esp. if breaks 2635.
Target 2690-2730, next 2800.
Stop 2560.
Potential double bottom



MDKA – last 2720



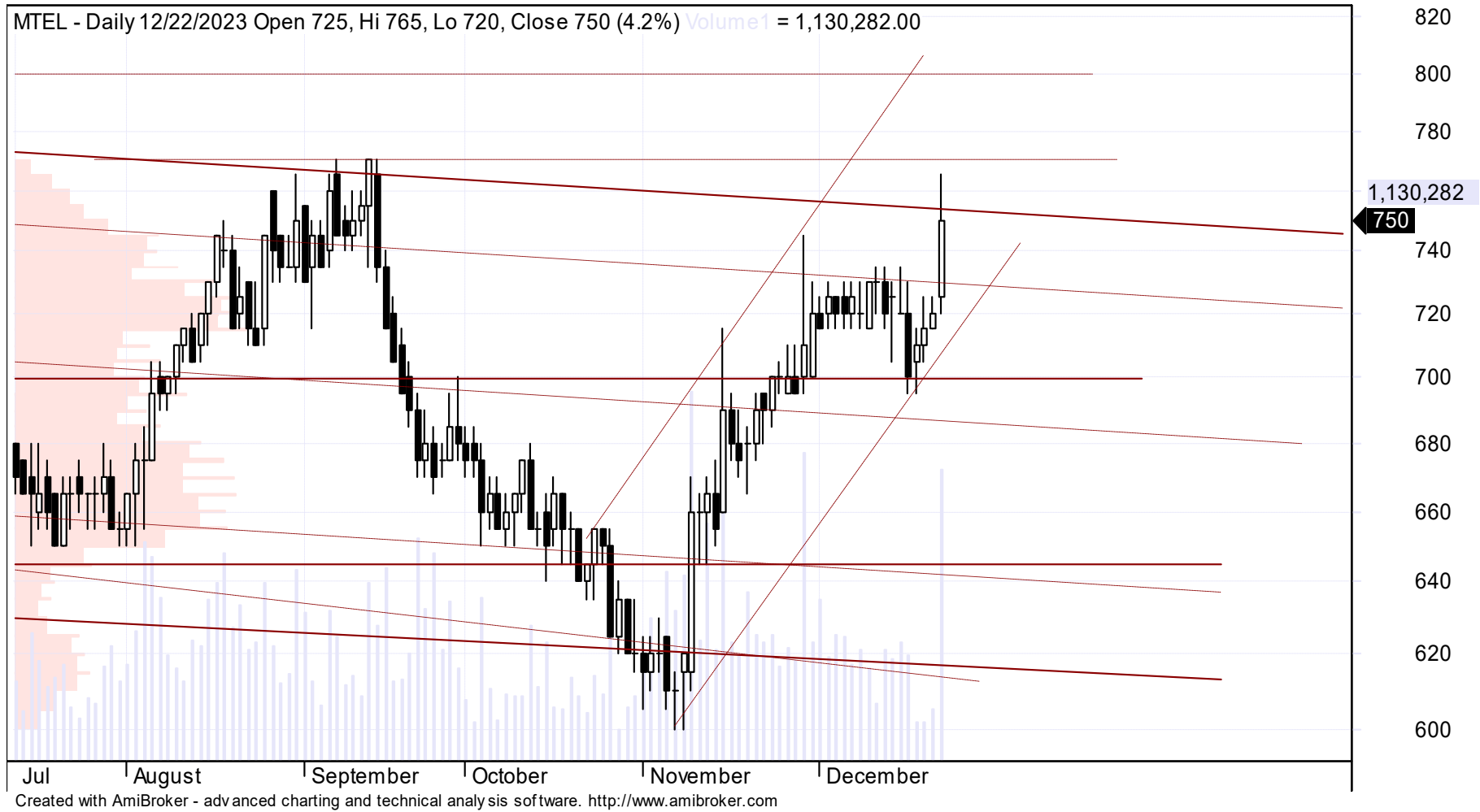
BUY
Target 2860-3000.
Stop 2615.
Upchannel



MTEL – last 750



BUY especially if breaks 760.
Target 770, next 800.
Stop 730
Testing trendline since Jan22



AMRT – last 2870



BUY, esp. if breaks 2900.
Target 2960-3000. Next 3100.
Stop 2830.
Anticipation breaks out



TPIA – last 5875



BUY.
Target 6125, next 6425.
Stop 5700.
Uptrend



ERAA – last 404

BUY, target 435-450, next 480.
Stop 394.
Double bottom (pattern since Nov23)



BUY.

Target 2430-2460, next 2550

Stop 2280.

Consolidation near strong support (pattern since Oct22)





Terima kasih