

IHSG upchannel



IHSG menguat dalam pola upchannel

Indeks kemarin kembali menguat dalam pola up channel sejak Nov23. Pola konsolidasi dalam dua pekan terakhir membuat indeks bergerak volatile, sehingga indeks dapat melemah lalu menguat atau sebaliknya. Kisaran saat ini di 7140-7230.

Untuk hari ini Analis Teknikal menyukai saham saham AMMN, TPIA, BRPT, BREN, dan RAJA dengan rating trading buy. Sedangkan BUMI dengan rating trading sell.

Day Trading Picks

Top Picks Today (Technical):

AMMN (6475); BUY-TP @6650-6900; Cutloss <6230
 TPIA (5350); BUY-TP @5450-5650; Cutloss <5250
 BRPT (1570); BUY-TP @1630-1670; Cutloss <1505
 BREN (7325); BUY-TP @7975-8150; Cutloss <6875
 RAJA (1700); BUY-TP @1860-1960; Cutloss <1660
 BUMI (86); SELL-TP @82-80; Cover >89
 <DISC. ON>



M. Alfatih, CFTe, CSA,
 CTA, CTAD, CIB
 +62 21 2854 8129
 m.alfatih@samuel.co.id

JCI Today's Top10 Value

Saham	Last Price	1D %Ch	Pivot	Support 2	Support 1	Resistance 1	Resistance 2
BBRI	5550	0.9%	5517	5617	5483	5583	5617
BBCA	9250	0.5%	9208	9333	9167	9292	9333
BRPT	1570	7.2%	1527	1667	1478	1618	1667
GOTO	87	1.2%	88	96	83	91	96
BMRI	5975	0.8%	5958	6008	5942	5992	6008
BBNI	5200	0.0%	5208	5283	5167	5242	5283
WIIM	1835	-17.7%	1900	2275	1680	2055	2275
APIC	1140	0.9%	1133	1153	1127	1147	1153
ASII	5625	0.4%	5625	5675	5600	5650	5675
AMMN	6475	1.2%	6467	6692	6358	6583	6692

Top Net Foreign Order Buy

	Daily	Weekly	Monthly	Quarterly
1	BBCA	BBCA	BBRI	BBNI
2	BMRI	BBRI	TLKM	AMMN
3	BRPT	BMRI	BBNI	TLKM
4	BREN	TLKM	ASII	FILM
5	AMMN	BBNI	BMRI	TPIA
6	ADRO	ASII	BBCA	AMRT
7	TLKM	TPIA	CUAN	BRPT
8	ASII	ADMR	BRPT	CTRA
9	ACES	CUAN	TPIA	CUAN
10	PGAS	BUKA	ADMR	INKP
11	BUKA	NCKL	BRIS	JSMR
12	JSMR	AMMN	AMMN	CPIN
13	EXCL	DSNG	UNVR	BRIS
14	ADMR	CTRA	AMRT	BRMS
15	GJTL	TOWR	TOWR	BNGA

Source: SamuelStar, BursaEfekIndonesia

Top Net Foreign Order Sell

	Daily	Weekly	Monthly	Quarterly
1	PGEO	GOTO	GOTO	GOTO
2	BBRI	KLBF	INCO	BBRI
3	BBNI	ARTO	KLBF	BBCA
4	FILM	UNTR	UNTR	INCO
5	UNTR	FILM	INDF	ICBP
6	BUMI	MDKA	ICBP	MEDC
7	ISAT	INDF	BUMI	ASII
8	AMRT	MEDC	MAPI	AKRA
9	BRMS	ISAT	MDKA	BMRI
10	TPIA	AMRT	MEDC	INDF
11	KLBF	BRMS	SIDO	MDKA
12	GOTO	MIDI	AKRA	KLBF
13	ERAA	ICBP	MBMA	MAPI
14	INKP	MAPI	PTBA	UNTR
15	MDKA	WIKA	WIKA	MTEL

Source: SamuelStar, BursaEfekIndonesia

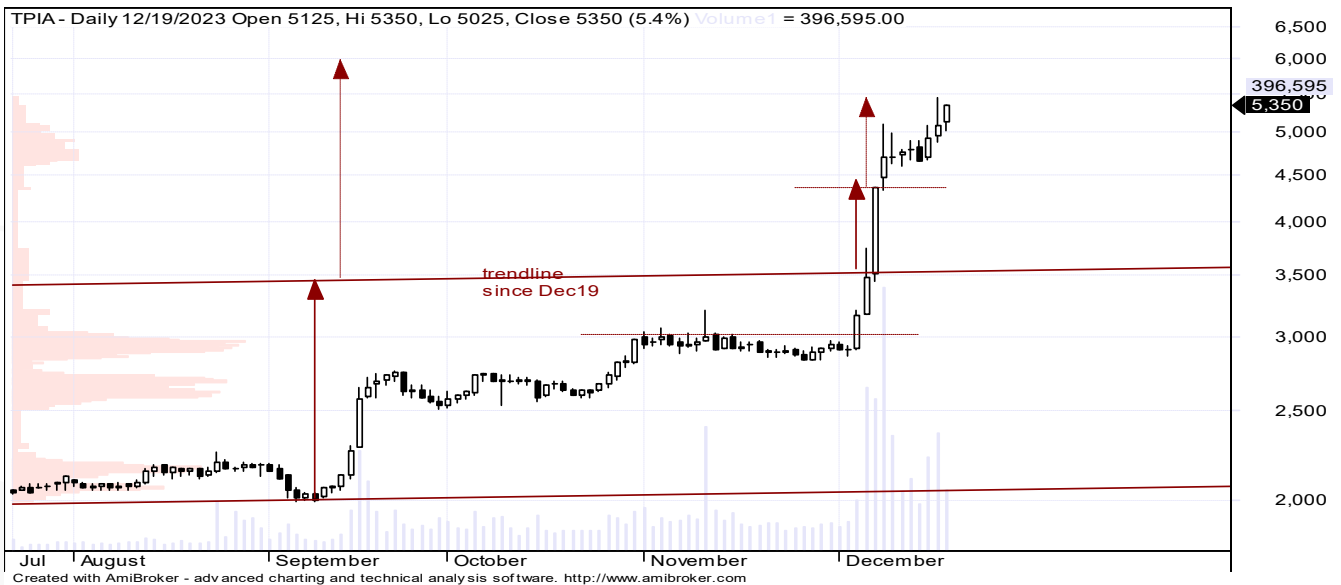
Chart Recommendations

Buy	LastPrice	1D%Ch	Target 1	Target 2	Stop	Rationale
AMMN	6475	1.17	6650	6900	6230	Rebound



AMMN (last 6475) - BUY. Target 6650-6900. Cutloss <6230. Rebound

Buy	Last Price	1D%Ch	Target 1	Target 2	Stop	Rationale
TPIA	5350	5.41	5450	5650	5250	Bullish near resistance



TPIA (last 5350) - BUY. Target 5450-5650. Cutloss <5250. Bullish near resistance

Buy	Last Price	1D% Ch	Target 1	Target 2	Stop	Rationale
BRPT	1570	7.16	1630	1670	1505	Rebound from support



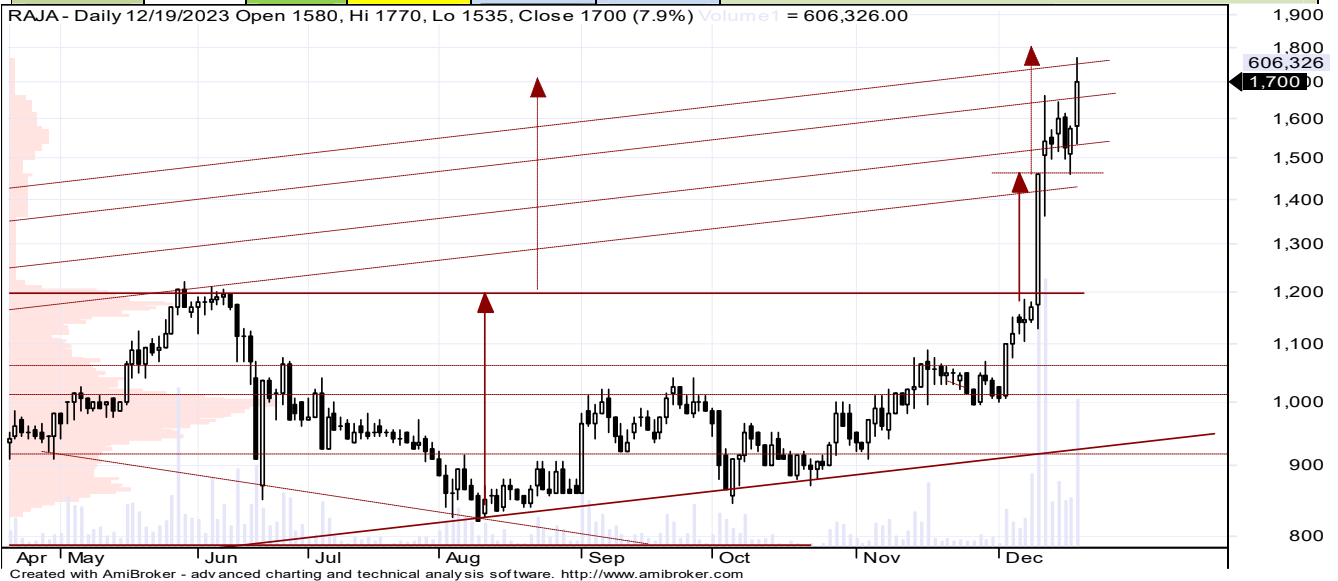
BRPT (last 1570) - BUY. Target 1630-1670. Cutloss <1505. Rebound from support

BUY	Last Price	1D% Ch	Target 1	Target 2	Stop	Rationale
BREN	7325	2.44	7975	8150	6875	Intraday buying near support



BREN (last 7325) - BUY. Target 7975-8150. Cutloss <6875. Intraday buying near support

BUY	Last Price	1D% Ch	Target 1	Target 2	Stop	Rationale
RAJA	1700	7.93	1860	1960	1660	Bullish continuation near upside target



RAJA (last 1700) - BUY. Target 1860-1960. Cutloss <1660. Bullish continuation near upside target

SELL	Last Price	1D% Ch	Target 1	Target 2	Cover	Rationale
BUMI	86	-3.4	82	80	89	Anticipation breaks down



BUMI (last 86) - SELL. Target 82-80. Cover >89. Anticipation breaks down

Technical Analysis Glossary

Support	: Level harga di bawah, dimana berpotensi menahan penurunan lebih lanjut
Resistance	: Level harga di atas, dimana berpotensi menahan kenaikan lebih lanjut
Breakout	: Pergerakan harga naik menembus Resistance. Mengindikasikan Uptrend
Breakdown	: Pergerakan harga turun menembus Support. Mengindikasikan Downtrend
Throwback	: Penurunan paksa jangka pendek pasca Breakout. Maksimum penurunan menguji Support yang berasal dari Resistance yang baru saja di-Breakout
Pullback	: Kenaikan paksa jangka pendek pasca Breakdown. Maksimum kenaikan menguji Resistance yang berasal dari Support yang baru saja di-Breakdown
Technical Rebound	: Kenaikan yang terjadi setelah harga menyentuh level Support
Technical Correction	: Koreksi yang terjadi setelah harga menyentuh level Resistance
Bullish Continuation	: Pergerakan yang mengindikasikan Uptrend sebelumnya akan berlanjut naik
Bearish Continuation	: Pergerakan yang mengindikasikan Downtrend sebelumnya akan berlanjut turun
Bullish Reversal	: Pergerakan yang mengindikasikan perubahan Downtrend menjadi Uptrend
Bearish Reversal	: Pergerakan yang mengindikasikan perubahan Uptrend menjadi Downtrend
Up Trendline	: Support Diagonal ke arah atas yang menandakan pergerakan Uptrend
Down Trendline	: Resistance Diagonal ke arah bawah yang menandakan pergerakan Downtrend
Up Channel	: Pergerakan Uptrend yang dibatasi oleh Support dan Resistance sejajar
Down Channel	: Pergerakan Downtrend yang dibatasi oleh Support dan Resistance sejajar
Day Trading	: Strategi trading dengan Holding Period selama 1 hari sampai 3 hari
Swing Trading	: Strategi trading dengan Holding Period sampai 3 bulan
Bottom Fishing	: Strategi trading dengan membeli saham yang telah turun cukup dalam



Research Team			
Prasetya Gunadi	Head of Equity Research, Strategy, Banking, Digital Banks	prasetya.gunadi@samuel.co.id	+6221 2854 8320
Lionel Priyadi	Macro Equity Strategist	lionel.priyadi@samuel.co.id	+6221 2854 8854
Muhamad Alfatih, CSA, CTA, CFTE	Senior Technical Analyst	m.alfatih@samuel.co.id	+6221 2854 8129
Yosua Zisokhi	Cement , Cigarette, Paper, Plantation, Telco Infra, Chemicals	yosua.zisokhi@samuel.co.id	+6221 2854 8387
M. Farras Farhan	Media, Poultry, Oil & Gas, Technology	farras.farhan@samuel.co.id	+6221 2854 8346
Juan Oktavianus Harahap	Coal, Metal Mining	juan.oktavianus@samuel.co.id	+6221 2854 8846
Jonathan Guyadi	Banking, Consumer Staples, Healthcare, Telco	jonathan.guyadi@samuel.co.id	+6221 2854 8321
Adolf Richardo	Editor	adolf.richardo@samuel.co.id	+6221 2864 8397
Ashalia Fitri Yuliana	Research Associate	ashalia.fitri@samuel.co.id	+6221 2854 8389
Daniel Aditya Widjaja	Research Associate	daniel.aditya@samuel.co.id	+6221 2854 8322
Laurencia Hiemas	Research Associate	laurencia.hiemas@samuel.co.id	+6221 2854 8392
Brandon Boedhiman	Research Associate	brandon.boedhiman@samuel.co.id	+6221 2854 8392
Haikal Putra Samsul	Research Associate	haikal.putra@samuel.co.id	+6221 2854 8353

Equity Institutional Team			
Widya Meidrianto	Head of Institutional Equity Sales	widya.meidrianto@samuel.co.id	+6221 2854 8317
Ronny Ardianto	Institutional Equity Sales	ronny.ardianto@samuel.co.id	+6221 2854 8399
Fachruly Fiater	Institutional Sales Trader	fachruly.fiater@samuel.co.id	+6221 2854 8325
Lucia Irawati	Institutional Sales Trader	lucia.irawati@samuel.co.id	+6221 2854 8173
Alexander Tayus	Institutional Equity Dealer	alexander.tayus@samuel.co.id	+6221 2854 8319
Leonardo Christian	Institutional Equity Dealer	leonardo.christian@samuel.co.id	+6221 2854 8147

Equity Retail Team			
Joseph Soegandhi	Director of Equity	joseph.soegandhi@samuel.co.id	+6221 2854 8872
Damargumilang	Head of Equity Retail	damargumilang@samuel.co.id	+6221 2854 8309
Anthony Yunus	Head of Equity Sales	anthony.yunus@samuel.co.id	+6221 2854 8314
Clarice Wijana	Head of Equity Sales Support	clarice.wijana@samuel.co.id	+6221 2854 8395
Gitta Wahyu Retnani	Equity Sales & Trainer	gitta.wahyu@samuel.co.id	+6221 2854 8365
Vincentius Darren	Equity Sales	darren@samuel.co.id	+6221 2854 8348
Sylviawati	Equity Sales Support	sylviawati@samuel.co.id	+6221 2854 8112
Handa Sandiawan	Equity Sales Support	handa.sandiawan@samuel.co.id	+6221 2854 8302
Denzel Obaja	Equity Sales Support	denzel.obaja@samuel.co.id	+6221 2854 8342
Yonathan	Dealer	yonathan@samuel.co.id	+6221 2854 8347
Michael Alexander	Dealer	michael.alexander@samuel.co.id	+6221 2854 8369
Reza Fahlevi	Dealer	reza.fahlevi@samuel.co.id	+6221 2854 8359

Fixed Income Sales Team			
R. Virine Tresna Sundari	Head of Fixed Income	virine.sundari@samuel.co.id	+6221 2854 8170
Sany Rizal Keliobas	Fixed Income Sales	sany.rizal@samuel.co.id	+6221 2854 8337
Safitri	Fixed Income Sales	safitri@samuel.co.id	+6221 2854 8376
Khairanni	Fixed Income Sales	khairanni@samuel.co.id	+6221 28548104
Saldy Achmad Yanuar	Fixed Income Sales	saldy.achmad@samuel.co.id	+6221 28548384
Nadya Attahira	Fixed Income Sales	nadya.attahira@samuel.co.id	+6221 2854 8305

DISCLAIMERS :Analyst Certification : The views expressed in this research accurately reflect the personal views of the analyst(s) about the subject securities or issuers and no part of the compensation of the analyst(s) was, is, or will be directly or indirectly related to the inclusion of specific recommendations or views in this research. The analyst(s) principally responsible for the preparation of this research has taken reasonable care to achieve and maintain independence and objectivity in making any recommendations. This document is for information only and for the use of the recipient. It is not to be reproduced or copied or made available to others. Under no circumstances is it to be considered as an offer to sell or solicitation to buy any security. Any recommendation contained in this report may not be suitable for all investors. Moreover, although the information contained herein has been obtained from sources believed to be reliable, its accuracy, completeness and reliability cannot be guaranteed. All rights reserved by PT Samuel Sekuritas Indonesia